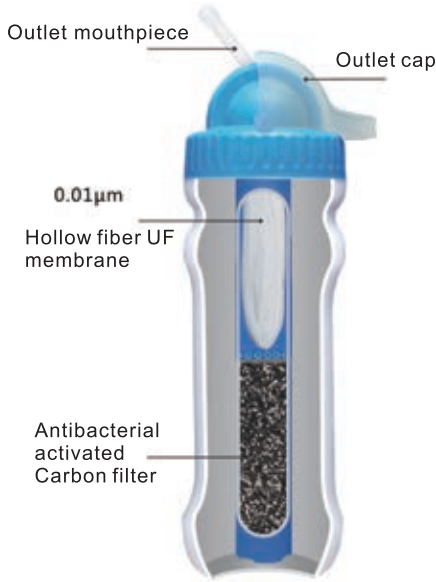




140081



140150
Material: BODY PP, LID PE
Capacity: 500/600ml

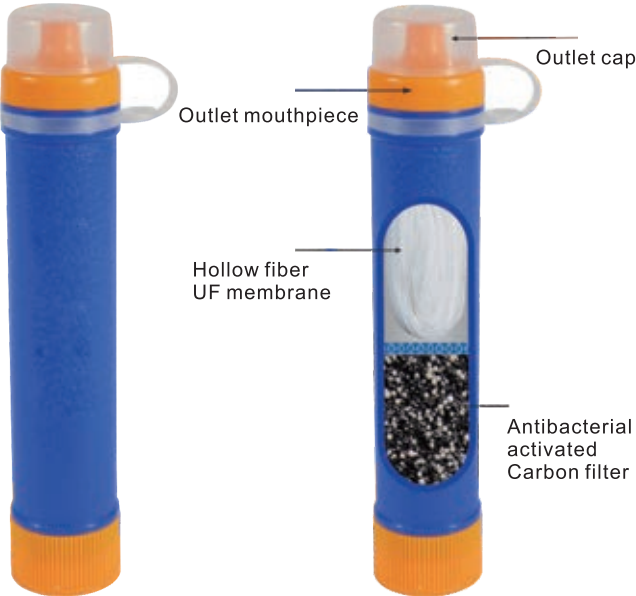


120354
Bottle cap



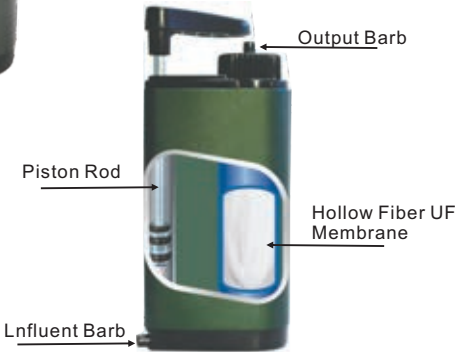
140082
Portable water filter bottle
Size: 78x265mm, 3000L, 195g
All kinds of fresh water can be used. Applicable for hiking, camping, fishing and climbing, emergency relief support.

Pocket water microfilter
Material: Antibacterial GAC, ABS, AL, silica, ceramic
Size: 47x220mm, 53000L, 455g
All kinds of fresh water can be used. Applicable for hiking, camping, fishing and climbing, emergency relief support. Portable, small and compact, durable.



140083
Mini water purifier straw
Size: 31x160mm, 1500L, 60g
All kinds of fresh water can be used. Removes 99.99% of the water borne bacteria. Highly efficiently reduces soluble heavy metal ions in water. Remove residual chlorine, improve taste and odor. Softens the water, inhibits and eliminates the growth microorganism.

160073
Diercon Tw01
Dimension: 72x38x148mm
Net weight: 245g
Filter capacity: up to 3000L depending on water quality
Material: AL, PCTG, Silica, etc.
Filter element: FC10, FC11
Guarantee: 5 year
Feature: Portable, Eco-friendly
Ideal for: traveling, hiking, cycling, hunting, expedition, climbing, fishing, relief support etc.



130916
Material: TRITAN
With ML mark on the body
Transparent colour



140085
Stainless steel vacuum flask
Capacity: 1.18L, 750ml, 500ml



120350
Stainless steel water bottle
Size: 12x30cm
Capacity: 2000ml



160059
capacity: 500ml
material: stainless steel



160035
ss mug with foldable handle
material: ss304
capacity: 18oz



160032
stainless steel cup
capacity: 16oz



160060
wine glass
a rubber bottom for limiting slippage
longstem design
cup body: #304, handle+base #202, thick: 0.6mm
capacity: 8oz
material: stainless steel
Except another glass is that you can unscrew and pinto bowl



160033
ss mug with lid
material: ss201
weight: 125g
capacity: 400ml/13.5oz



160020
Collapsible water bag
Material:PE
Size:13x23
with a carabiner



160022
Water bag
Material:TPU
Capacity:2L,3L,2L
Size:46x35x41
56x45x40
46x35x52



160025
Water bag
Material:PVC
Capacity:2L, 1.5L,2L
Size:50x40x55.5
46x35x41
46x35x42



160010
5-Gallon Collapsible Water Container
Opening position : Upward
Opening inner diameter: 32mm
Handle: Fixed
Expanded dimensions : 29x24x7cm
Folded dimensions : 26x24x7cm
N.W 300g±5%
Material : Food Grade LDPE
Hot/Cold-resisting :50℃/-20℃
Thickness: min 0.26mm



120434
Refillable Water Pouch Set,
16oz Refillable Water Pouch Set with Carabiner



130815
Hip flask
The capacity:6 oz(around 180ml)
Material:stainless steel.



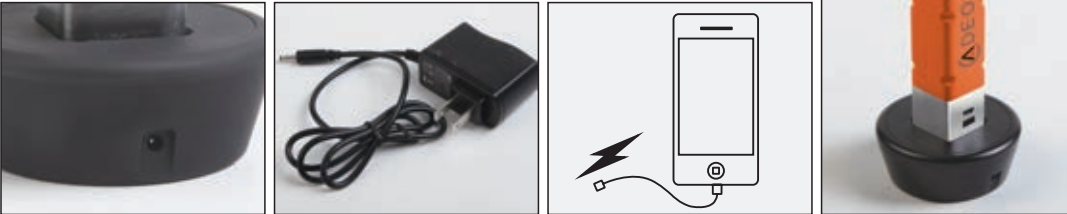
130749
FOLDA WATER CARRIER
1 GAL , 2.5 GAL, 5 GAL



140089

ADEON Multi-functional Flashlight

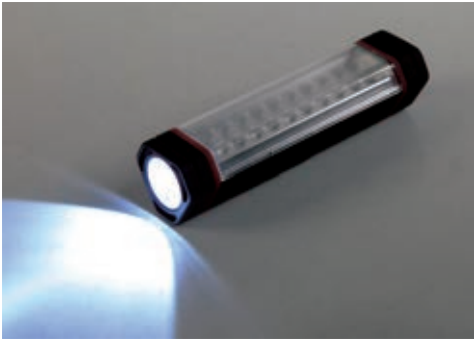
Product size:33x33x155mm,weight:120g
Charging base size:85x85x35mm,weight:105g
Bulb:CREE XPG-2
Highest brightness output:300-350 Lumen
Battery:1x18650 Li-ion rechargeable battery(4.2V/2200MAH)
Three conventional modes: High-Low-Strobe
Battery indicator visible in the dark
Power source:-Charging base with AC wall plug
 -USB charging from laptop
Serves as power bank: recharges your mobile phones vis USB
Fully charged in 4 hours
Run time:4-5 hrs on high,8-9 hrs on low
2 YEARS MANUFACTURER'S WARRANTY.





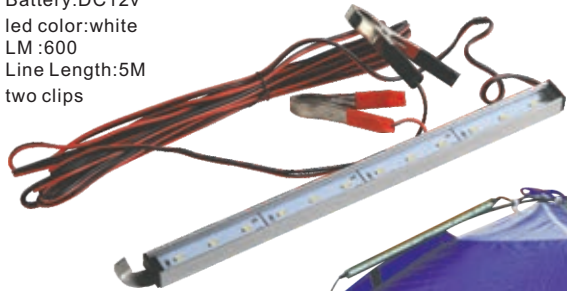
140080

4x20LEDs+ 0.5W LED multi-function Camping Lantern
Size: 110mmx185mm
Material: ABS/GPPS
Battery:4xAAA for each pc,totally 16xAAA needed



160031

LED WORK LIGHT
Model No:HS-3528
Battery:DC12v
led color:white
LM :600
Line Length:5M
two clips



Model Number:PT-B5521/PT-B5530
LED Type:SMD5050
Viewing Angle:120°
Luminous Flux:480Lm/690Lm
Rated Power:4.8w/7.2w
Driving Method:Constant Voltage
Working Voltage:DC 12V
Color Temperature:6000-6500K
LED Quantity:21leds/30leds
Dimensions:400*16*10mm/500*16*10mm
CRI:80
Protection Level:IP65
Life Span :>35000Hours
Working Cument :0.4A/0.6A
Great For:camping ,cabins ,etc.



150014
Camping Lantern
4 white/red/orange LED
Lumen :300
Battery : 3D
Size: 190x86x86mm
Function: 100% on/70% on/50% on/off



150039
Camping lantern
Size:90×90×182mm
Material:ABS/GPPS
Bulb:16 white LEDs(LED paster:0.5w)
Battery: 3.7V/3600MAH rechargeable Li-ion battery
With one USB/MICR05P(80cm)
USB transformer not included
Function:100% on/50% on/off



150038
Multifunction lantern
Bulb:30 white LEDS for lantern(15pcs for 2 sides)
18 white LEDS for torch
Battery:3.7V/3600MAH Li-ion battery for lantern
3AAA for each torch
With one USB/MICR05P(80cm)
USB transformer not included
Function:lantern mode15 LEDs on one side/30 LEDs on two sides/off Torch mode 3 LEDs on/15 LEDs on/off



120019
Multi-functional camping lantern. middle size
Bulb: 1W/3W CREE LED(150 Lumen / 300 Lumen)
Battery: 3D
Function: 50% on/100% on/Flash/off
The lantern can hanged upside down after cover taken.
Easy-find green light blinks every 5 seconds when light is in off position.



130616
Multi-functional camping lantern, large
Bulb: 3W/T6 CREE LED(300 Lumen / 500 Lumen)
Battery: 6 X D
Function: 70% on/100% on/Flash/off
The lantern can hanged upside down after cover taken.
Easy-find green light blinks every 5 seconds when light is in off position.



120267
Mini multi-functional camping lantern
Bulb: 1W high-power LED
Battery: 3 X AA
Function: 50% on/100% on/ flash/off
Easy-find light blinks every 5 seconds when light is in off position.
Then lamp can be divided into 2 parts, of which one part is tent light



120268

Multifunction lantern
Bule: 30 white LEDS for lantern (15pcs for 2sides)
20 white LEDS for each torch (2 torches in total)
Battery: 3 X AAA for each torch; 4D for lantern
Function: lantern mode
30LEDs on / 30LEDs with 30LEDs of 2 torches on/off
torch mode
3LEDs on / 15LESS on/off



130702

Camping lantern
Materials: ABS
Bulb: 56 white LEDS
Batter: 2 X D
Function: 14LEDs on/28LEDs on/42LEDs on/56LEDs on/off
Can be turned in 360 degree

130681

Camping lantern
Material: ABS
Bule: 36 white LEDS
Battery: 2xD
Function: 12LEDs on/24LEDs on/36LEDs on
Can be turned in 360 degree



130760

Multifunction lantern
Bule: 30 white LEDS for lantern (15pcs for 2sides)
18 white LEDS for torch
12 white LEDS for book light
Battery: 3.6V 300mAh Ni-MH for each torch; 3D for lantern
Function: lantern mode
30LEDs on / 30LEDs with 15LEDs of torch on/12LEDs on/off
torch mode
3LEDs on / 15LESS on/off
with magnifier on torch



120272

Camping lantern
Material: ABS
Bulb: 6 super white LEDS
Battery: 3 X AA
Function: on/flash/off

130522

Hurricane lantern
Materials: Iron with copper plated
Bulb: 12 LEDs
Battery: 4 X AA
Function: twist the switch can
adjust lantern's brightness



130804

Hurricane rechargeable lantern
Material: iron with bronze color.
Bulb: 8mm 9LEDs
Battery :inner battery,Li-ion 18650 3500mAh 3.7V.
Function: twist the switch can adjust lantern's brightness

120302

Kerosene Lantern
Function: Burns kerosene
Oil, lamp oil or citronella oil



130525

Telescope Lantern, large
Materials: ABS
Bulb: CREE Q5, 3W, 220Lumen
Battery: 4 X AA
Function: 50%/100% on/flash/off
Have a ring on the top for easy carrying,
3 trestles on the bottom to keep steady.



130524

Telescope Lantern, small
Materials: Aluminum
Bulb: 1W CREE, 110 Lumen
Battery: 3 X AAA
Function: on/off
It is telescopic, can be used as a camping light
when stretch out, can be used as a flashlight in dark



130574

Foldable camping lantern
Bulb: 1W white LEDs
Battery: 3 X AA
Function: 100% on/50% on/off



130517

Telescope lantern
Materials: Aluminum
Bulb: 1W white LEDs
Battery: 3 X AAA
Function: 100% on/50% on/flash/off



140022

Foldable camping lantern
Bulb: 1 white LED
Battery: 3xAA
Function: 100% on / 50% on / off



150100

Tin lamp TI212
Bulb: 3LEDs
battery: 3AAA
color: red, blue, green
function: 100% on/off/flash
On the back with a metal hook
Surface plating





140018
Solar light
Materia: PE
Size: 13x13x11cm
Bulb: 10 LEDs



150076
5 LED TENT LIGHT
Battery: 4 x1.5VAAA
Material: ABS
Function: infrared remote control, remote control distance of 10 meters
Color: Blue
Size: Lamp: 109x43MM
Remote control distance: 107x35.5x162MM



150077
3 LED TENT LIGHT
Battery: 3xAAA
Function: on / off
color:blue
With metal base

150021
Camping Lantern
Bulb:3 W LEDs
Luminous: high mode: 60-65Lm
Low mode::20Lm
Size:62x53mm
Weight:96g
Colour:Available color
Battery:rechargeable
With micro USB cable
Function50% on/100% on/flash /off
Power indicator and Hook
Magnetic Bottom
Waterproof: IP 43
Lighting Memory Function



150015
oldable dynamo camping lantern
Material:ABS
Bulb: 1 LED
Rechargeable battery(60-70
Lumen, 370mAh)USB
Function:50% on/100% on/off



150020
Camping Lantern
Bulb:3 SMD LEDs
Luminous: high mode: ≥150Lm
Low mode::≥20Lm
Size: 66x37mm
Weight: 68g
colour: Available color
Battery:3AAA
Function:100% on/70% on/50% on/fast flash/slow flash/off
With hook
Waterproof: IP43



160058
10W flood light
Luminous Flux: 600 lumens
Beam angle: 60°/120°
Battery:18650 lithium 7.4V 2.2Ah
Run time: 2 hrs
Fully charge time: 4 hrs
CRI>75
Weight:0.84kgs
Ip65

120440
Material: Aluminium
Bule: 5mm white LED
Battery:1xAAA
With tactical switch (on-off)

150061
Material:Aluminum
Bulb:1 CREE XPE LED
Battery:1×AA
Function:100%/50%/flash/off
Waterproof:IP44

150060
Material:Aluminum
Bulb:1 CREE XPE LED
Battery:3AAA
Function:100%/50%/flash/off
Waterproof:IP44

150062
Material:Aluminum
Bulb:1 CREE XPE LED
Battery: 2×AA
Function:100%/50%/flash/off
Waterproof:IP44

150063
Material:Aluminum
Bulb:1 CREE XPG LED
Battery: 3×AA
Function:100%/50%/flash/off
Waterproof:IP44

150064
Material:Aluminum
Bulb:1 CREE T6 LED
Battery: 3×C
Function:100%/50%/flash/off
Waterproof:IP44

150059
Material:Aluminum
Bulb:1 CREE T6 LED
Battery:3×C
Function:100%/50%/flash/off
Infinite rotating focusing flashlight
Waterproof:IP 44

150043
Material:Aluminum
Bulb:1 CREE XPG LED
Battery:3AAA
Function:100%/50%/flash/off
Infinite rotating focusing flashlight
Waterproof:IP 44



120127
Material:Aluminum
Bulb:3w cree white LED
Battery:2AA
Function: 100% on/off/ 25% on/off / flash / off
With clip



120056
Material:Aluminum
Bulb:Chinese 1W/3W high power LED
Max Lumens:70-80lm/110-120lm:
Battery:2×AA
Waterproof:IP×67 diving torch



120419
Mini torch
1 white LED
Battery: 1xAAA



120118
Material:Aluminum
Bulb:1 white LEDs(35lm)
Battery: 1xAA



130684
Material:Aircraft-grade Aluminium
Bulb:CREE Q5(150LM)
Battery: 1x14500
Function:high/low/flash
Telescopic focus,water-resistant and with clip



120113
Material:Aluminum
Bulb:10 white LED+6green LED
Battery: 3xAAA
Function:6green LEDs on/16LEDs on/off
with compass on the bottom



120106
Bulb:9 white LED
Material:Rubber
Battery:3AAA
Function:9LEDS on/off



120105
Material:ABS
Bulb:9 white LEDs
Battery:3AAA
Function:9LEDS on/off



120017
Material:Aluminum
Bulb:9 white LEDs
Battery:3AAA
Function:9LEDS on/off



150052
Foldable torch light
Bulb: 3W+COB 3W
Battery:4AAA



120133
1 white 5mm LED
material : Aluminium
Battery:1xAAA
with tactical switch (on-off)
with clip



150053
6 in one torch light
Bulb: 3W+4 RED LEDs
Battery:3AAA
Foldable



160011
T1249 LED headlamp
light color:white ,red, green,blue
Headband color:black
battery:3xAAA
with push-button switch
water proof: Ip44
Headband Length:50-60cm
headband width:2.5cm
120 lumens initial brightness headlights
Headlight headlight features: 100% On - 50% on 25% off bright -SOS-
Headlight taillight features: bright - flash - off



120011
Head Lamp
Bulb: 4white+3 small red LEDs
Battery:3XAAA
Function:2white LEDs on/4white LEDs on/3red LEDs on/off,pre the switch for 2 seconds,4 white Leds flash as SOS

120183
Bulb:Cree3 Watt
Battery:3*AAA normal batteries included
Function:50% on/100% on/red led flash/off



130728
3LED HED LIGHT
ROTATE HEAD
USING BATTERY:3XAAA
FUNCTION:WIHTE LED ON/2 RED LED ON /OFF



130722
Adjustable Focus Head light
Bulb: Cree Q5
Using:3XAAA Battery or Rechargeable battery
Function:50% on/100% on/flash/ off rotated head



120217
Head lamp
Bulb:14white LEDs
Battery:3XAAA
Function:4LEDs on/8 LEDs on /14LEDs on/Flashing/Ooff



150018
3 LEDs HEAD TORCH
ROTATE HEAD
USING BATTERY:2xAAA
FUNCTION:ON/FLASH/OFF



120040
Head lamp
Bulb: 1W LED
Battery: 3xAAA
Function: 100%/50% on/flash/off



150019
3 LEDs HEAD LIGHT
ROTATE HEAD
USING BATTERY:2xAAA
FUNCTION:50%ON/100% ON/FLASH/OFF



120186
Head lamp
Bulb:1W+3LED
Battery:3XAAA
Function:1W on/1 white led on/2red led on/2 red flash/off



150044
Head lamp
bulb: XPE
Battery:3AAA



150045
Head lamp
Bulb:1×T6+2×XPE
Battery:2×18650



150046
Head lamp
Bulb:COB 1W



150048
Head lamp
Bulb: 1W+SMD RED LEDS
Battery: 1AA



150050
Head lamp
Bulb:SMD
Battery:2×CR2032



150051
Head lamp
Bulb:COB 1W
Battery:3AAA



120233
Working light
Bulb: 24LEDs
Battery: 3xAAA
With magnet base, hanging hook



120235
Working light
Bulb: 24+4LEDs
Battery: 3xAAA
Function: 24 LEDs on/off/4LEDs on/off



120234
Working light
Bulb: 24+3LEDs
Battery: 3xAAA
With magnet base, hanging hook



120314
Bulb:24+4LEDs
Battery: 4xAA
The lamp can be seperated into 2 parts



120317
Bulb:48LEDs
Battery: 4xAA
With magnet base and hook

160057
3LED IN FRONT , COB (90 LUMEN) ,
WITH MAGANET.
Function:3LED ON - OFF-COB ON - OFF
color:red,blue,black
battery: 3xAAAAlakaline battery .
Size:9.6x6x3.4CM
Material:ABS+Rubber paint
have a COB product front lights
Product positive use of a COB Strip Light
The top three ordinary Round LED
Weight: 65G optical efficiency (LM / W):. 100-110LM / 1W



140032
12LEDs light bar
Material: Aluminum
Length: 30cm
Brightness: 60Lumen for each LED; 12000mcd for total
With magnet on backside & hook on the top.



140005
Mini work pen light
Material: ABS with rubber finish
Bulb: 6 white LEDs
Battery: 3xAAA
Function: on/off, with clip and magnet



120252
Spot light
Material: ABS
Bulb: halogen bulb
Battery: 6V, 4AH lead-acid battery
Function: on/off



150065
6 LED USB LIGHT



120225
Working light
Material: ABS with rubber finished, 20x6x3cm
Bulb: 24 white LEDs
Battery: 3xAA
Function: on / off



120018
Bulb:18LEDs
Battery:2D
Function:on/off
Fan lamp,can stand as a fan,hang as a fan or lamp



120160
Name: Emergency light and tool
Material: ABS
Bulb: 1 white LED+3 red LEDs
Battery:2 AA
Function: beacon button on_3 LEDS
Flash/off/flashlight button on_1 LED
On/off. Magnetic end attaches to your car: window spike
works like
a hammer to shatter car window for emergency escapes.

120262
Mini work pen light
Material: ABS with rubber finish
Bulb: 6 white LEDs
Battery: 2xAAA
Function: on/off, with clip



150054
Pocket torch
Bulb: COB 3W
Battery:3AAA



150057
Pocket torch
Bulb: COB 3W
Battery:3AAA



150055
Pocket torch
Bulb: 9 SMD
Battery:3AAA



150058
Pocket torch
Bulb: 6 SMD
Battery:3AAA



150022
COB Pen Light
Material: ABS
Bulb:1W COB(110-120 Lm)
Size:17.6x3.3x1.7cm
Battery:3xAAA
With magnet inside holder



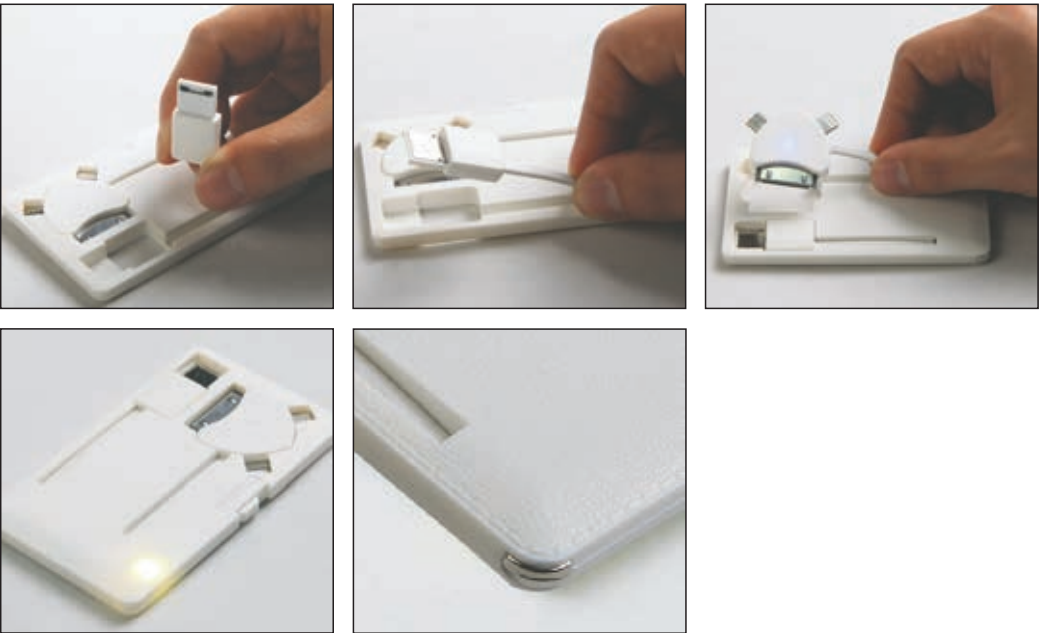
160017
pen light HG00370B
The main body of tough ABS materials
With transparent cover
1pc 3W COB high-luminance LED in the front---200LM
Power by 3pcs AAA batteries
Strong magnet in the clip to attract iron object
Discretionary adjust lighting direction by rotatable clip(180°)
Ideal optical and no screw design
Surface with rubber spray-painting feels good
Camo color are optional
Different color available
On/off switch on the top

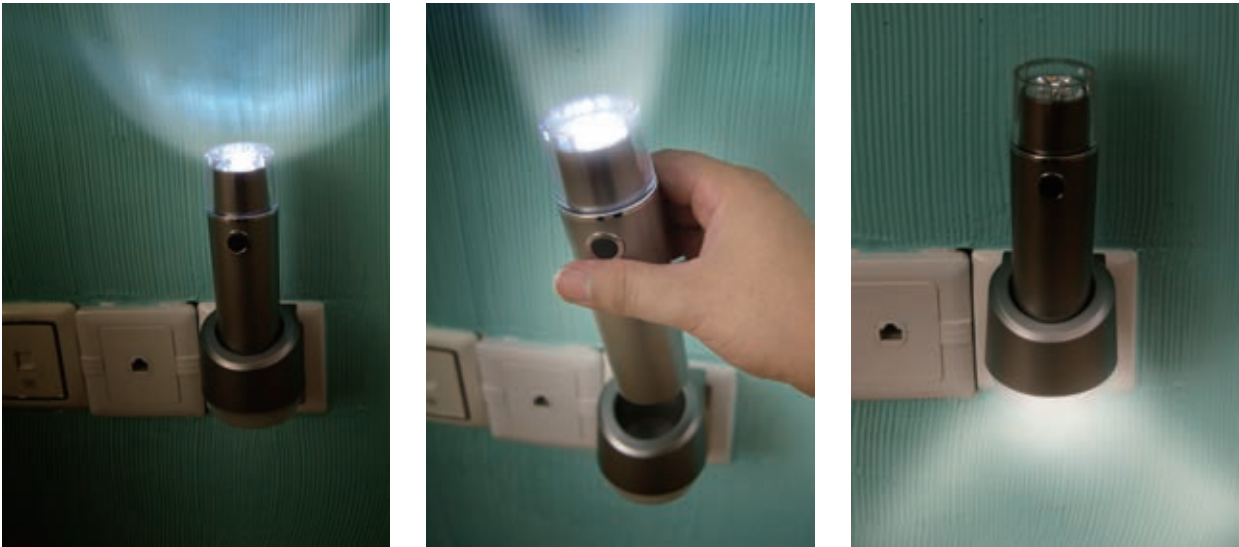


150056
Pocket torch
Bulb: COB 3W
Battery:3AAA



140191
Lifepow Credit Card Power Bank
Size:92*55*6mm
Color: White, with 2 colors 4 patriots logo printed.
Ultra-slim and wallet size
Armed with 3-in-1 tip
Strong LED flashlight
Micro SD reader
Lifesaving hammer
Input:5V/350mA, Output:5V/1A
Charging time:2 hours
Flashlight:2W original Samsung LED
Connectors:Morco USB/Apple 30pin/Apple Lighting
Capacity:600mA
With Built-in Micro SD Reader and Lifesaving Hammer
Conversion Rate:≥86%
Packing"each in bubble bag, and then 100pcs /double corrugated master carton.





Multi-Function Flashlight

130921

Features:

- Handheld light lasts up to 9 hours after initial charge
- Nightlight switch with AUTO sensor and On/Off functions
- Soft translucent nightlight (activates in AUTO position)
- Bright nightlight activated with On function
- Batteries and bulbs - No need for replacement or disposal.
- Insert Base UPRIGHT into wall outlet. Rotate AC plug if necessary
- Safe and reliable charging / no contact prongs
- Low energy consumption
- Environmentally friendly; no replacement of batteries is required

Specification: Last Update : 2013 / 08

Light Color: Cool White
Color Temperature : 6000K (±200K)
LED Type : 6 White LEDs for Flashlight
2 White LEDs for Nightlight
Rechargeable Battery :3.7V Li-ion battery
MAGNET INDUCTION TECHNOLOGY (no contacts inside base)
- Charger base simply plugs into any AC outlet.
Charge time : 12 Hours
Flashlight use time :9 Hours
Input Voltage:AC 100V/120V/220V , 50Hz/60Hz
Power Consumption :2 W (Typical)
Lifetime (System) :2 Years
Dimension : 63 (L) x 92 (W) x 193 (H) mm
Weight / Unit :245 g
Housing :PC Cover + ABS V0
Operating temperature :-20° C ~ 45° C
Storage temperature :-30° C ~ 80° C
Safety Certification :Rosh,CE,CUL,FCC,GS,SAA,PSE
CUL File No.: E322267



After initial charge Induction Flashlight can remain plugged in and used for any of its three functions :

- Power Failure Mode
 - Super bright 6 LED light automatically turns on during power outages (after 24 hour initial charge)
- Handheld Light Mode
 - Slide switch control activates 6 LED Bulbs
 - S.O.S flash
- Nightlight Mode
 - Use the AUTO function and the nightlight will automatically turn on whenever room space becomes dark.
 - Use the ON function to turn on bright nightlight

Multi-Function Flashlight

140028

Features:

- Handheld light lasts up to 5 hours after initial charge
- Nightlight switch with AUTO sensor and On/Off functions
- Soft translucent nightlight (activates in AUTO position)
- Bright nightlight activated with On function
- Batteries and bulbs - No need for replacement or disposal.
- Insert Base UPRIGHT into wall outlet. Rotate AC plug if necessary
- Safe and reliable charging / no contact prongs
- Low energy consumption
- Environmentally friendly; no replacement of batteries is required

Specification: Last Update : 2013 / 08

After initial charge induction flashlight can remain plugged in and used for any of its three functions:

- Power Failure Mode
 - Super bright 3 LED light automatically turns on during power outages (after 24 hour initial charge)
- Handheld Light Mode
 - Slide switch control activates 3 LED Bulbs
- Nightlight Mode
 - Use the AUTO function and the nightlight will automatically turn on whenever room space becomes dark.
 - Use the ON function to turn on bright nightlight

Light Color: Cool White
Color Temperature :6000K (±200K)
LED Type : 3 White LEDs for Flashlight
Orange color 1 LED for Nightlight
Rechargeable Battery : 3.7V ~120mAh Lithium li-ion battery
MAGNET INDUCTION TECHNOLOGY (no contacts inside base)
- Charger base simply plugs into any AC outlet.
Charge time : 12 Hours
Flashlight use time :5 Hours
Input Voltage:AC 100V/120V/220V , 50Hz/60Hz
Power Consumption :1 W (Typical)
Lifetime (System) :2 Years
Dimension : 98 (L) x 56 (W) x 107 (H) mm
Weight / Unit: 105 g
Housing :PC Cover + ABS V0
Operating temperature :-20° C ~ 45° C
Storage temperature :-30° C ~ 80° C
Safety Certification :Rosh,CE,CUL,FCC,GS,SAA,PSE
CUL File No.: E322267

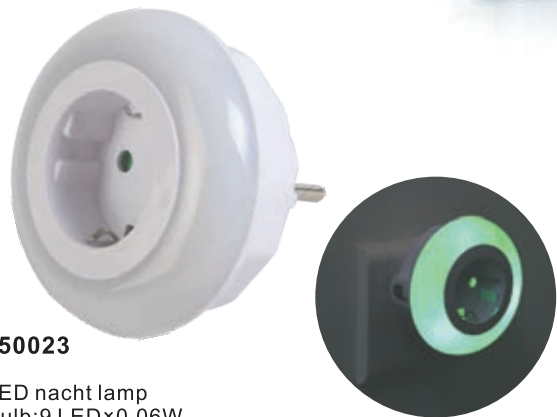




120137
Material:ABS
Bulb:5 white LEDs on top/15 white LEDs on side
Battery:14430Li-ion(3.7v/650mAh)
Charging Power source:AC(220V/50HZ/0.015A)
Fully charged time:8h
Work time:15LEDs: > 2. 5h/ 6LEDs > 12h
Sensor distance:2-3m
Sensor degree:60°
Quiescent current : ≤ 5uA
Function:
On flashlight mode 15LEDs on top on/5LEDs in front on/of
On emergency sensor light mode
The 15LEDs in front on when sensing peple getting close in the rang of
2-3m and degree within 60iñin dark



120136
Material:ABS
Bulb:5 white LEDs on top/15 white LEDs on side
Battery:14430Li-ion(3.7v/650mAh)
Charging Power source:AC(220V/50HZ/0.015A)
Fully charged time:8h
Work time:15LEDs: > 2. 5h/ 6LEDs > 12h
Sensor distance:2-3m
Sensor degree:60°
Quiescent current : ≤ 5uA
Function:
On flashlight mode 15LEDs on top on/5LEDs in front on/of
On emergency sensor light mode
The 15LEDs in front on when sensing peple getting close in the rang of
2-3m and degree within 60iñin dark



150023
LED nacht lamp
Bulb:9 LED×0.06W
Light colour:green/blue/white
Power source:AC 100-240V/50HZ/0.04A
Touch the button beside will change light colour
CE/ROHS/LVD/GS approved
Function:the night light plug in the outlet,in low
lightness,sensor detected will automatic light on



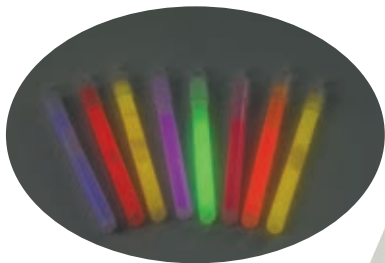
120431
LED candle light
Material: ABS
Battery: CR2032



140121
50 hours liquid oil candle light



130740
100 hours liquid oil candle light



120654
4inch OR 6 inch Lightsticks
Colour: YELLOW, RED, BLUE, GREEN, PURPER
Weight:1 oz.(28g)